

What the FBI said

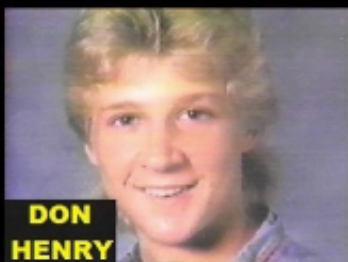
about Kevin and Don



KEVIN
IVES



DON
HENRY



After this murder was aired on "Unsolved Mysteries," Harmon put Richard Garrett in charge of all leads. Individuals would call in with information and a formal statement was never taken. The individual would then be threatened by telephone to keep his/her mouth shut.

The investigation by Little Rock FBI has revealed possible law enforcement involvement in the deaths of

possible links. Surrounding this case are at least six murders with

Investigation, at this point in time, reveals that a coverup in the investigation exists with law enforcement

cover-up of an investigation of the Ives-Henry homicide in Saline County, Arkansas, during dealing by public officials in this county.

INVESTIGATION HAS REVEALED THAT LAW ENFORCEMENT OFFICIALS IN THE LITTLE ROCK AREA MAY HAVE BEEN INVOLVED IN CAPTIONED HOMICIDE.

At that point, evidence from the HENRY-IVES case began to be misplaced.

Law enforcement officials alleged to be involved in drug trafficking in Saline County include:

The Little Rock Division has been gathering intelligence on current political corruption in Saline County which will parallel the corruption resulting in captioned victims' deaths.

As a result of numerous homicides surrounding the incident related to the boys, individuals are very scared to talk to anyone due to fear for their own life.

cover-up. This alleged cover-up supposedly involves law enforcement and political officials. In as much as has

IT IS NOW BELIEVED THAT ALL OF THESE INDIVIDUALS ARE CONNECTED IN THE COVER-UP INVESTIGATION REGARDING THE DEATHS OF DON HENRY AND KEVIN IVES.

There are numerous references in these pages regarding a drug war going on in Saline County, as well as law enforcement involvement in drug trafficking.

Judge JOHN COLE was paid to appoint DAN HARMON as a special prosecutor in the IVES-HENRY case.

In light of a possible law enforcement cover-up, it is requested that the FBI remake a tape on "Unsolved Mysteries" to replace the current tape running

Based on the foregoing, it is my recommendation that the FBI conduct no further investigation into this matter.

Ivian C. Smith
Special Agent in Charge
FBI, State of Arkansas